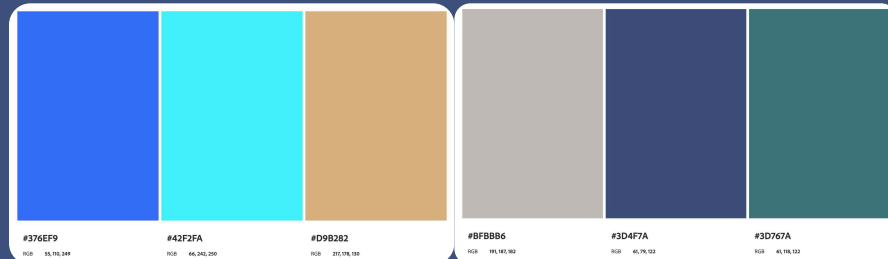


Final Ideas



Color Palette

Split Complementary

•Wisdom •Tranquility •Sadness

She's accumulated wisdom throughout her long life. she's a calm and composed, she learned to not be impulsive with the fruit accident.

She sees others leaving the world around her and feel sad thinking how alone she'll eventually be alone.

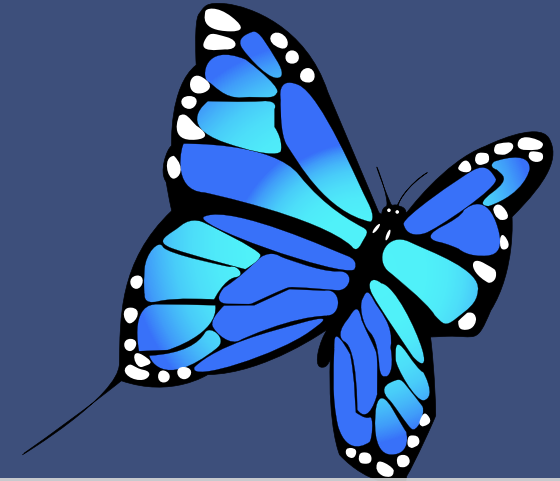
•Friendliness •Warmth •Positivity

She's a very friendly person believing that people needs to welcome others into their lives instead of rejecting. Even though she still thinks about the time passing, and it's consequences she's always positive and looking for a bright future

•Clarity •Calm •Healing

Clarity describe her supennatural ability very well, she sees and predict to a certain point what happens or is happening with her analytical mind.

She's a shephend, helping people be a better version of themselves.



I thought about adding butterflies to add details and colors but it also reminded me of the butterfly effect which join the idea of the character nicely.

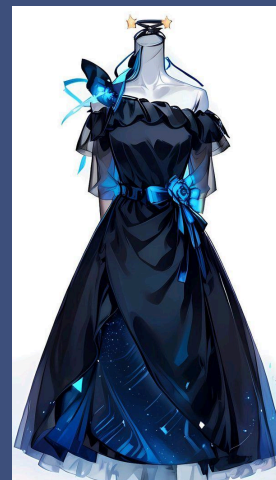
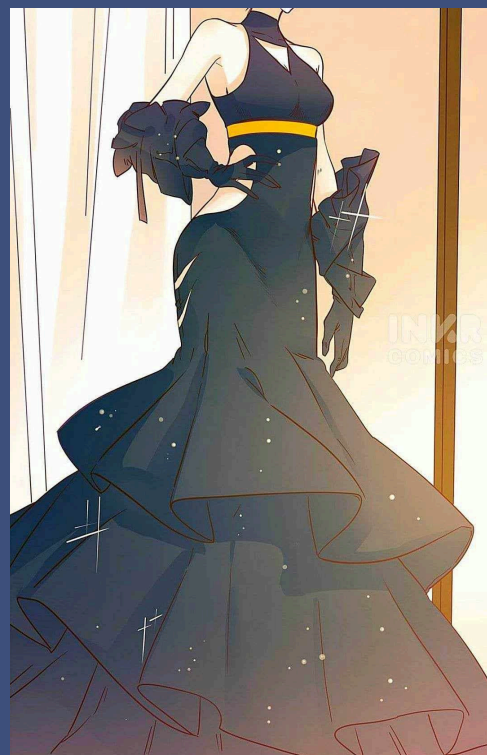
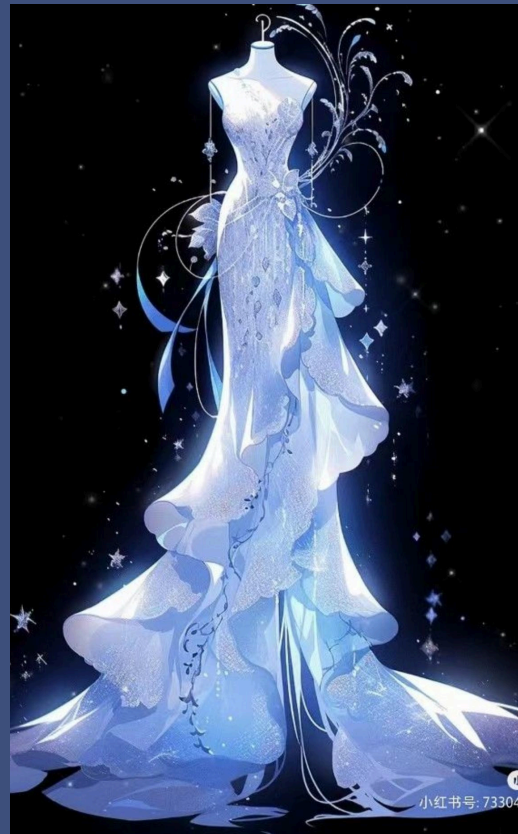
Rooted in chaos theory, the butterfly effect describes how a tiny change in the initial stages of a system can cause huge, non-linear consequences elsewhere over time. Mathematician and meteorologist Edward Norton Lorenz originally explained this theory metaphorically, suggesting that a flap of a butterfly's wing in one corner of the world could cause a tornado elsewhere weeks later.

Font

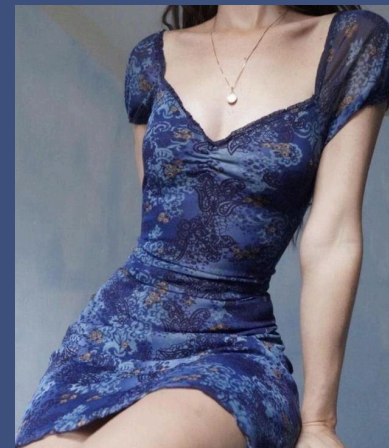
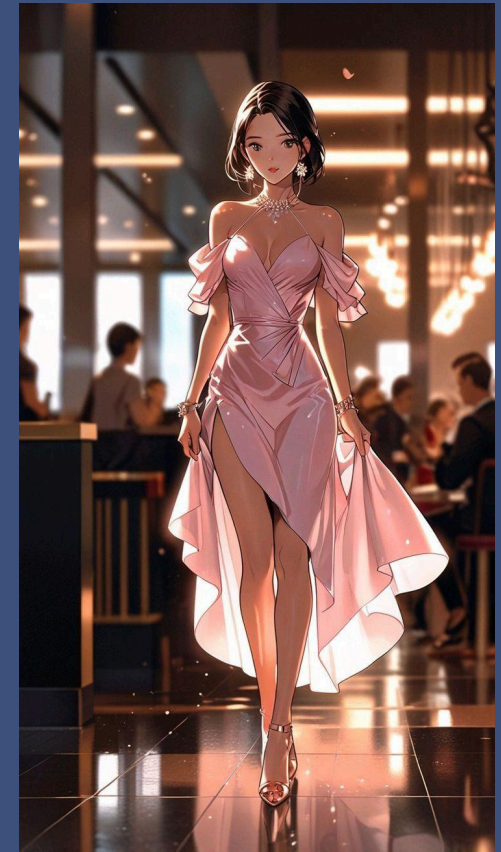
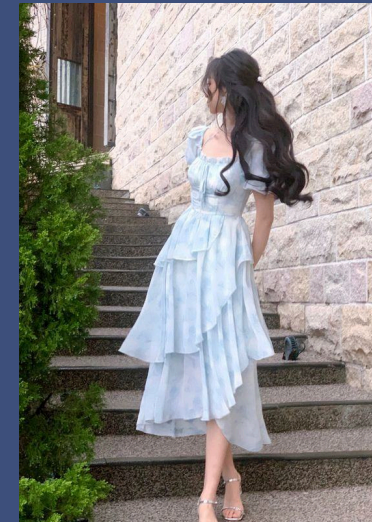
I choose this font because I wanted a Font that flows like the time. More importantly its simple and readable without too much effort.

Grandiose Dresses

These are the type of dress I was thinking when I choose to make a dress, but wanted to simplify them slightly.

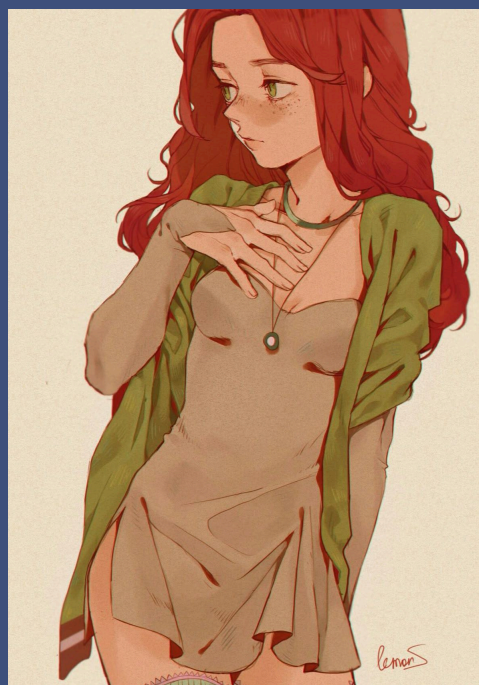
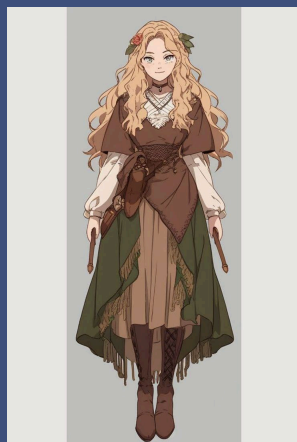
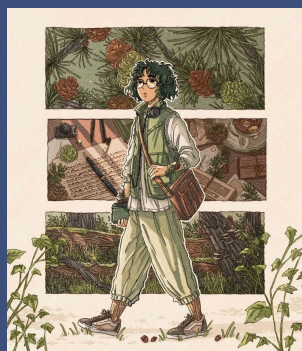
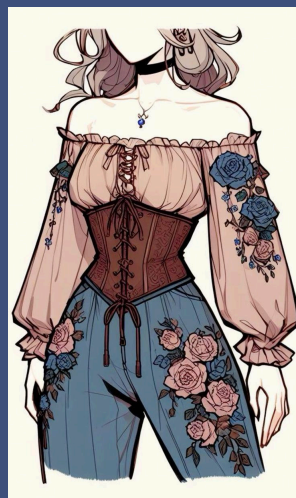
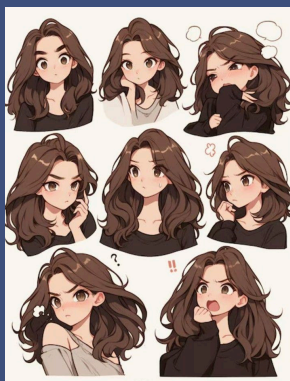


Simple Dresses



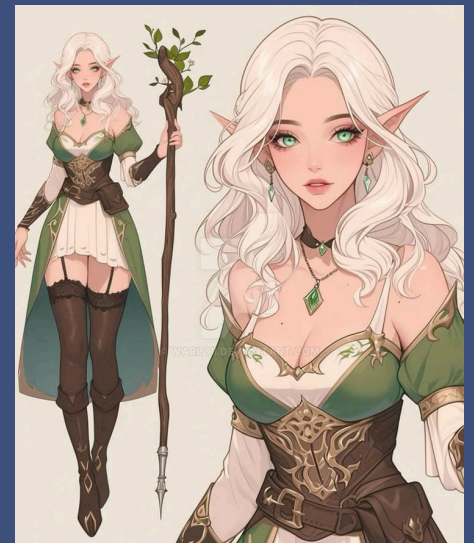
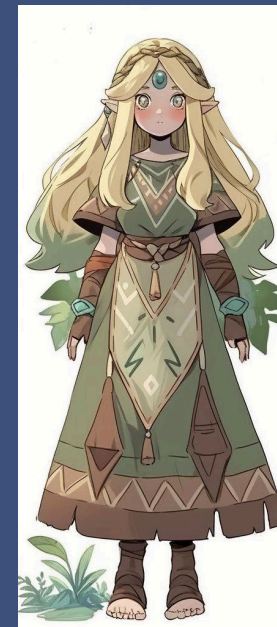
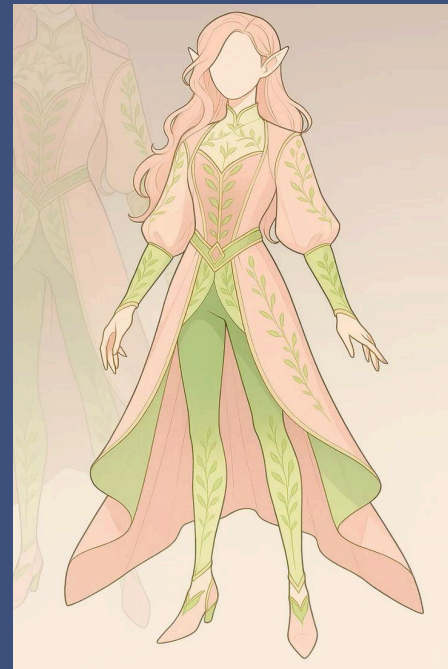
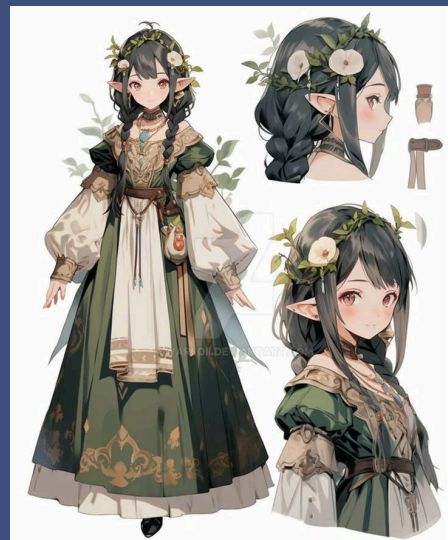
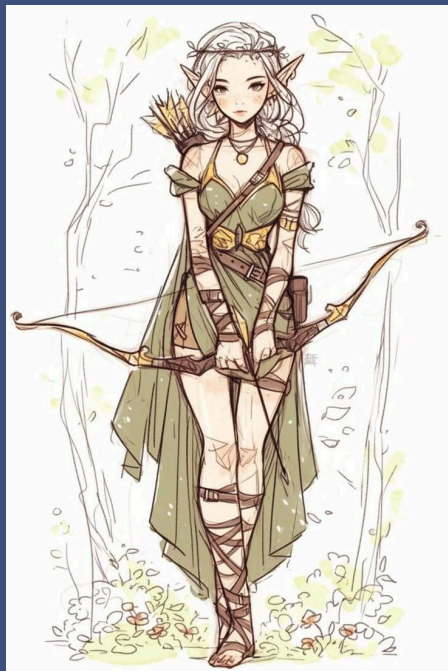
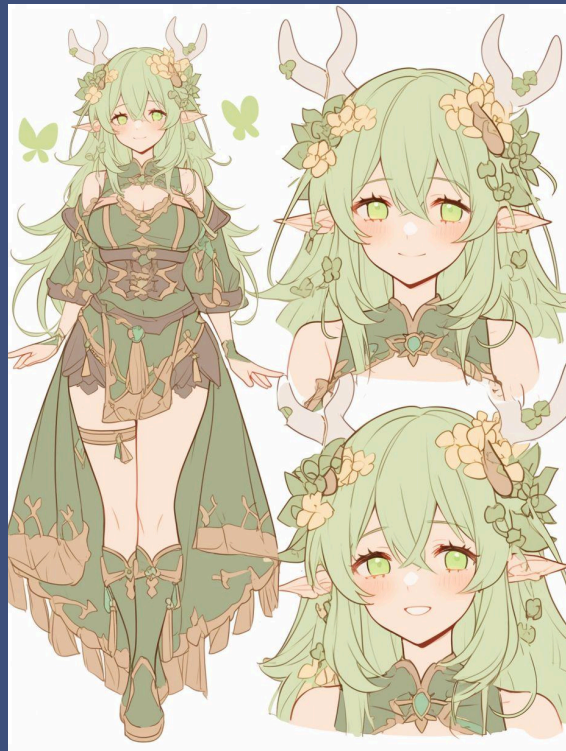
Casual Clothes

I want to design a few other more casual outfit and find that those would fit a plant loving person.



Elven Outfits

The idea was to look at outfits that elves wears because they're usually close to nature and don't limit their movement (Chronella is a Botanist).



Details, Icon and Logo

These are inspiration to eventually make a logo and add details to costumes and accessories.

